

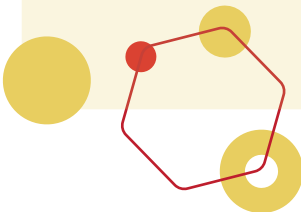


## **CENTRIFUGAL CAST (AND TURNED) ROUND BRASS TUBES**

TRIP MATERIALS offers centrifugal cast (and turned) round brass tubes in a wide range of sizes. These tubes have a high resistance to mechanical stress and can be used in corrosive environments.

**We have over 80 years of experience in the production of brass, bronze and copper semi-finished products.**

- Production to the highest quality standards
- Fast offer
- Manufacturer prices
- Fast delivery directly from stock or on order
- Transport assured at request
- Technical consultancy



**[www.tripmaterials.ch](http://www.tripmaterials.ch)**

We provide products and services at the highest quality standards to satisfy the most demanding customers requirements.



# CENTRIFUGAL CAST (AND TURNED) ROUND BRASS TUBES

## DIMENSIONS AND STANDARDS

Correspondent alloys		Standard, temper	Dimensions	Applications
Alloys as per EN standards	Alloys as per ASTM standards			
CC754S (CuZn39Pb1 Al-C)	—————	Centrifugal cast  EN 1982 GZ  ASTM B271/ B271M Mo2	Outer diameter: <b>150 – 500 mm</b>  Inner diameter: <b>min.100 mm</b>  Length: <b>max. 940 mm</b>	Pistons for hydraulic pumps, bearings, other parts resistant to high mechanical stress and in corrosive environments, including sea water
CC762S (CuZn25Al5 Mn4Fe3-C)	C86200 (CuZn25Al4 Mn4Fe3)			
	C86300 (CuZn25Al6 Mn4Fe3)			
CC764S (CuZn34Mn3 Al2Fe1-C)	—————			

By request, TRIP MATERIALS can offer centrifugal cast (and turned) round tubes made of other brass types.

